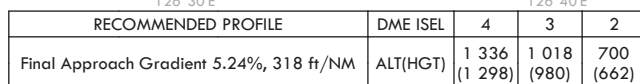


AERODROME ELEV 59 ft
HEIGHTS RELATED TO
THR RWY 14L - ELEV **38 ft**

SEOUL APP	119.75
	119.1
GIMPO TWR	118.1
	118.05

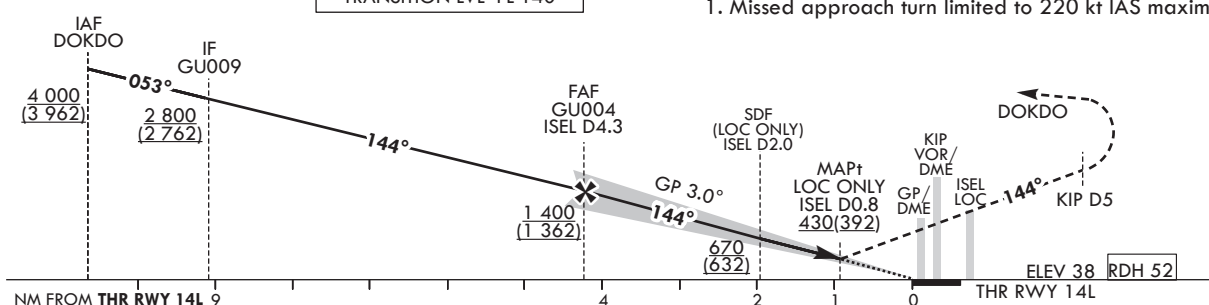
ILS Z or LOC Z RWY 14L

Note : Approach under ICAO Flight Procedures.



Climb to 4 000 ft on HDG 144 to KIP D5
then turn right to intercept and proceed via R 311 SEL
to DOKDO. Hold as published.

1. Missed approach turn limited to 220 kt IAS maximum.



OCA (H)		A	B	C	D
Straight-in Approach	CAT-I	238 (200)			
	LOC	430 (392)			

*Timing Not authorized for defining MAPt.
*Circling Not authorized.

Change :	Information of landing minima(OCA(H)).
----------	--

SEOUL/Gimpo Intl(RKSS)
ILS Z or LOC Z RWY 14L

AERONAUTICAL DATA TABULATION

ILS/LOC Z Approach to RWY 14L from DOKDO		
Fix / Point		Coordinates
DOKDO(IAF)		37°36'17.1"N 126°33'07.1"E
GU009(IF)	BRG 53.48°/6.20 NM	37°40'40.0"N 126°38'36.6"E
GU004(FAF)	BRG 143.54°/4.30 NM ISEL	37°37'07.1"N 126°43'04.8"E
D2.0 ISEL (SDF LOC ONLY)	BRG 143.54°/2.00 NM ISEL	37°35'32.2"N 126°45'04.3"E
D0.8 ISEL (MAPt LOC ONLY)	BRG 143.54°/0.80 NM ISEL	37°34'41.1"N 126°46'08.4"E
THR RWY 14L		37°34'14.55"N 126°46'41.80"E
ISEL DME		37°34'03.8"N 126°46'48.1"E
KIP VOR/DME		37°33'27.1"N 126°47'31.3"E
D5 KIP	HDG 144	37°29'58.1"N 126°52'02.1"E
DOKDO	R 311 SEL/21.00 NM	37°36'17.1"N 126°33'07.1"E

**INSTRUMENT
APPROACH
CHART - ICAO**

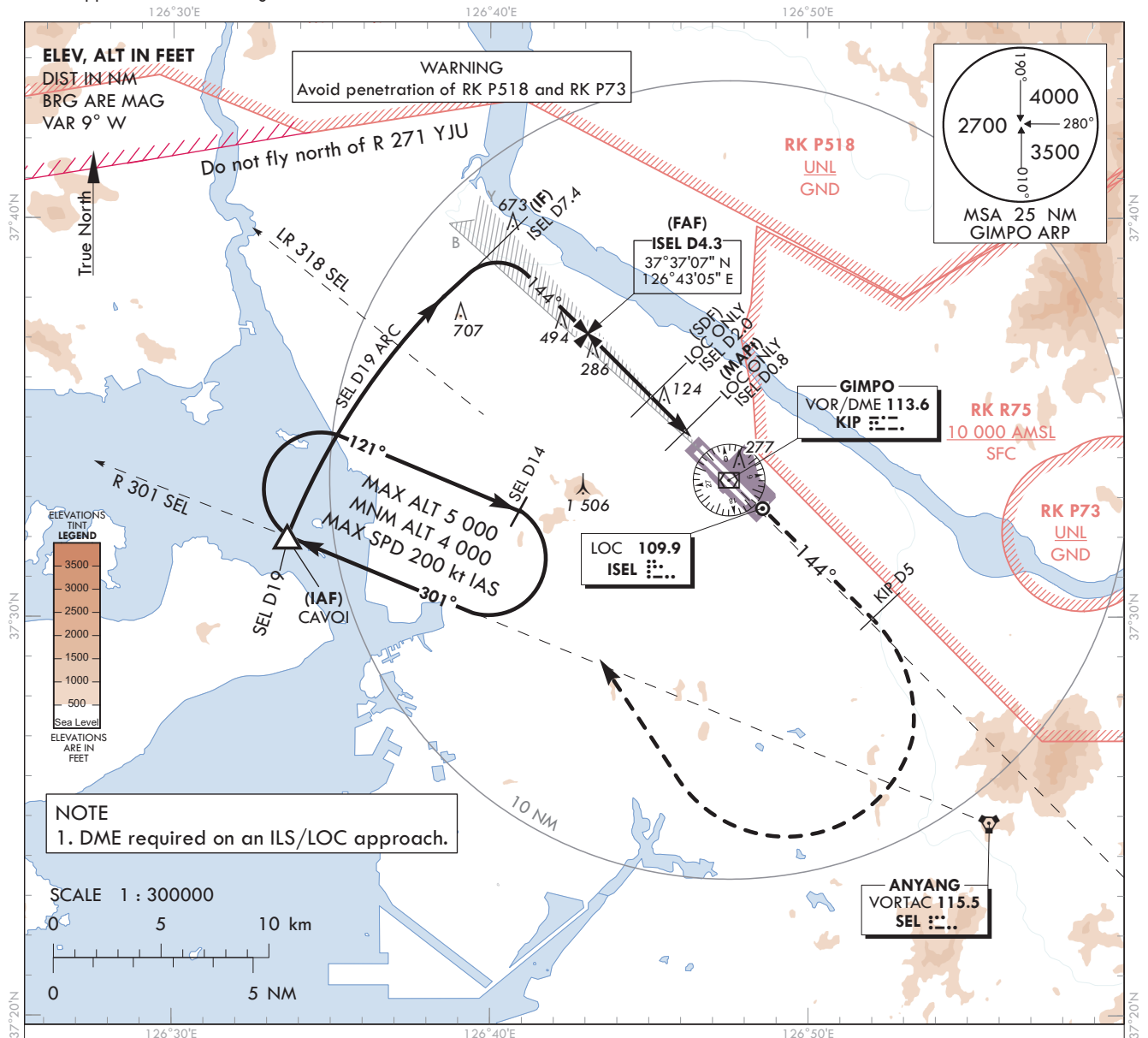
AERODROME ELEV 59 ft
HEIGHTS RELATED TO
THR RWY 14L - ELEV 38 ft

SEOUL APP 119.75
119.1
GIMPO TWR 118.1
118.05

SEOUL/Gimpo Intl(RKSS)

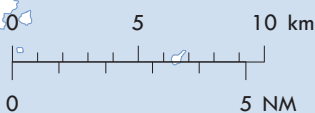
ILS Y or LOC Y RWY 14L

Note : Approach under ICAO Flight Procedures.



NOTE
1. DME required on an ILS/LOC approach.

SCALE 1 : 300000

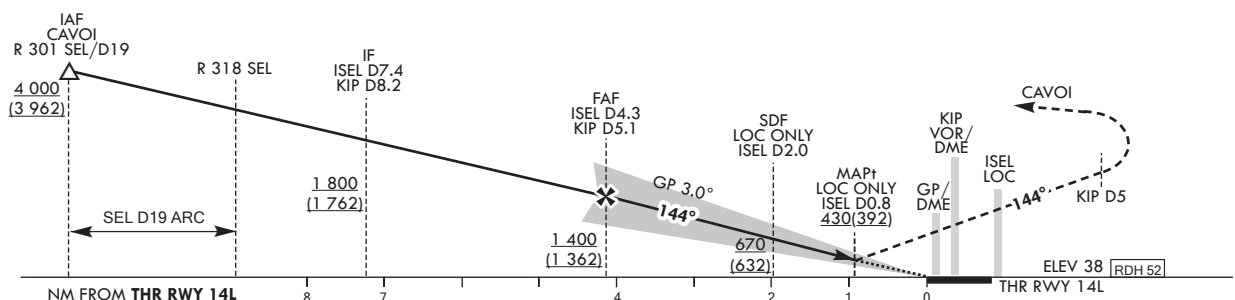


RECOMMENDED PROFILE	DME ISEL	4	3	2
Final Approach Gradient 5.24%, 318 ft/NM	ALT(HGT)	1 336 (1 298)	1 018 (980)	700 (662)

TRANSITION ALT 14 000
TRANSITION LVL FL 140

NOTE

1. Missed approach turn limited to 220 kt IAS maximum.



OCA (H)		A	B	C	D	MISSED APPROACH Climb to 4 000 ft on HDG 144 to KIP D5 then turn right to intercept and proceed via R 301 SEL to CAVOI. Hold as published.
Straight-in Approach	CAT-I	238 (200)				
	LOC	430 (392)				

Change : Information of profile view and Amended phrase(COVOI → CAVOI).

SEOUL/Gimpo Intl(RKSS)
ILS Y or LOC Y RWY 14L

AERONAUTICAL DATA TABULATION

ILS/LOC Y Approach to RWY 14L from CAVOI			
Fix / Point		Coordinates	
CAVOI(IAF)	R 301 SEL/19.00 NM SEL	37°32'02.0"N	126°33'37.0"E
D7.4 ISEL(IF)	BRG 143.54°/7.40 NM ISEL	37°39'20.6"N	126°40'16.7"E
D4.3 ISEL(FAF)	BRG 143.54°/4.30 NM ISEL	37°37'07.1"N	126°43'04.8"E
D2.0 ISEL (SDF LOC ONLY)	BRG 143.54°/2.00 NM ISEL	37°35'32.2"N	126°45'04.3"E
D0.8 ISEL (MAPt LOC ONLY)	BRG 143.54°/0.80 NM ISEL	37°34'41.1"N	126°46'08.4"E
THR RWY 14L		37°34'14.55"N	126°46'41.80"E
ISEL DME		37°34'03.8"N	126°46'48.1"E
KIP VOR/DME		37°33'27.1"N	126°47'31.3"E
D5 KIP	HDG 144	37°29'58.1"N	126°52'02.1"E
CAVOI	R 301 SEL/19.00 NM	37°32'02.0"N	126°33'37.0"E

**INSTRUMENT
APPROACH
CHART-ICAO**

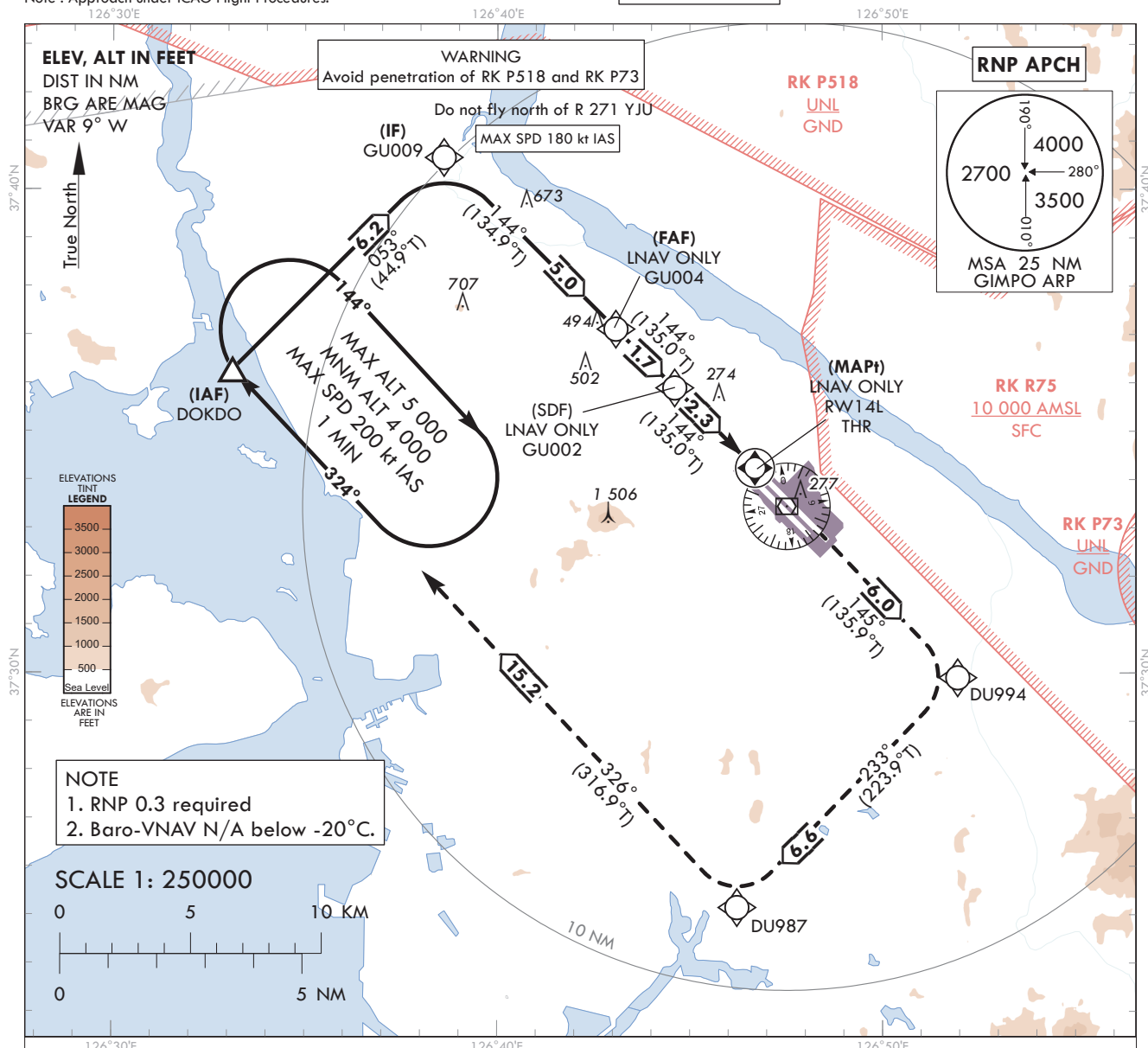
AERODROME ELEV 59 ft
HEIGHTS RELATED TO
THR RWY 14L - ELEV 38 ft

SEOUL APP 119.75
119.1
GIMPO TWR 118.1
118.05

SEOUL/Gimpo Intl(RKSS)

RNP RWY 14L

Note : Approach under ICAO Flight Procedures.



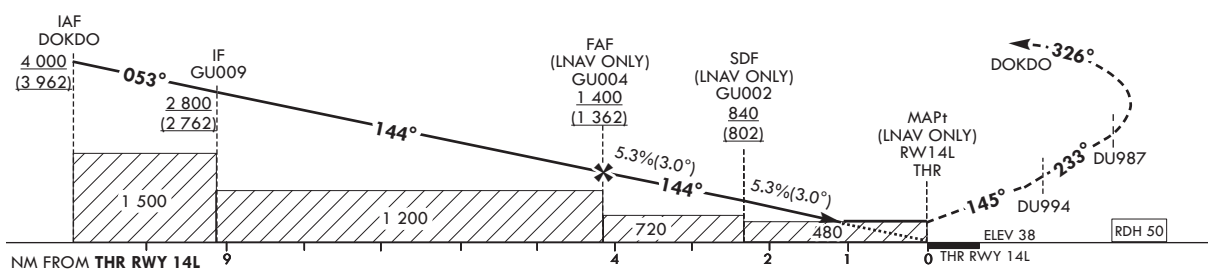
TRANSITION ALT 14 000
TRANSITION LVL FL 140

MISSED APPROACH

Climb to 4 000 ft. Track to DU994, DU987 and DOKDO. Hold as pushed.

NOTE

1. Missed approach turn limited to 220 kt IAS maximum.



OCA (H)		A	B	C	D		Knots	60	90	120	150	180
Straight-in Approach	LNAV/VNAV	450 (412)				Rate of descent	V/V fpm	318	478	637	796	955
	LNAV	480 (442)				*Timing Not authorized for defining MAPt. *Circling Not authorized.						

Change : Information of landing minima(OCA(H)).

SEOUL/Gimpo Int'l(RKSS)
RNP RWY 14L

AERONAUTICAL DATA TABULATION

Instrument Approach Procedure Coding Tables

RNP RWY 14L

Serial Number	Path Descriptor	Waypoint Identifier	Fly-over	Course/Track °M(°T)	Distance (NM)	Turn direction	Altitude (ft)	Speed (kt)	Coordinates	VPA/ TCH	Navigation specification	Remarks
001	IF	DOKDO	-	-	-	-	+4 000	-	37°36'17.1"N 126°33'07.1"E	-	RNP APCH	IAF
002	TF	GU009	-	053 (044.9)	6.2	-	+2 800	-180	37°40'40.0"N 126°38'36.6"E	-	RNP APCH	IF
003	TF	GU004	-	144 (134.9)	5.0	-	+1 400	-	37°37'07.1"N 126°43'04.8"E	-	RNP APCH	FAF
004	TF	GU002	-	144 (135.0)	1.7	-	+840	-	37°35'54.2"N 126°44'36.6"E	-	RNP APCH	SDF
005	TF	RW14L	Y	144 (135.0)	2.3	-	+480	-	37°34'14.55"N 126°46'41.80"E	-3.01/50	RNP APCH	MAPt
006	TF	DU994	-	145 (135.9)	6.0	-	-	-	37°29'54.5"N 126°51'57.6"E	-	RNP APCH	-
007	TF	DU987	-	233 (223.9)	6.6	-	-	-220	37°25'09.3"N 126°46'13.6"E	-	RNP APCH	-
008	TF	DOKDO	Y	326 (316.9)	15.2	-	+4 000	-220	37°36'17.1"N 126°33'07.1"E	-	RNP APCH	-
009	HM	DOKDO	Y	324 (314.9)	-	R	-5 000 +4 000	-200	37°36'17.1"N 126°33'07.1"E	-	RNP APCH	1 min (Outbound timing)

**INSTRUMENT
APPROACH
CHART-ICAO**

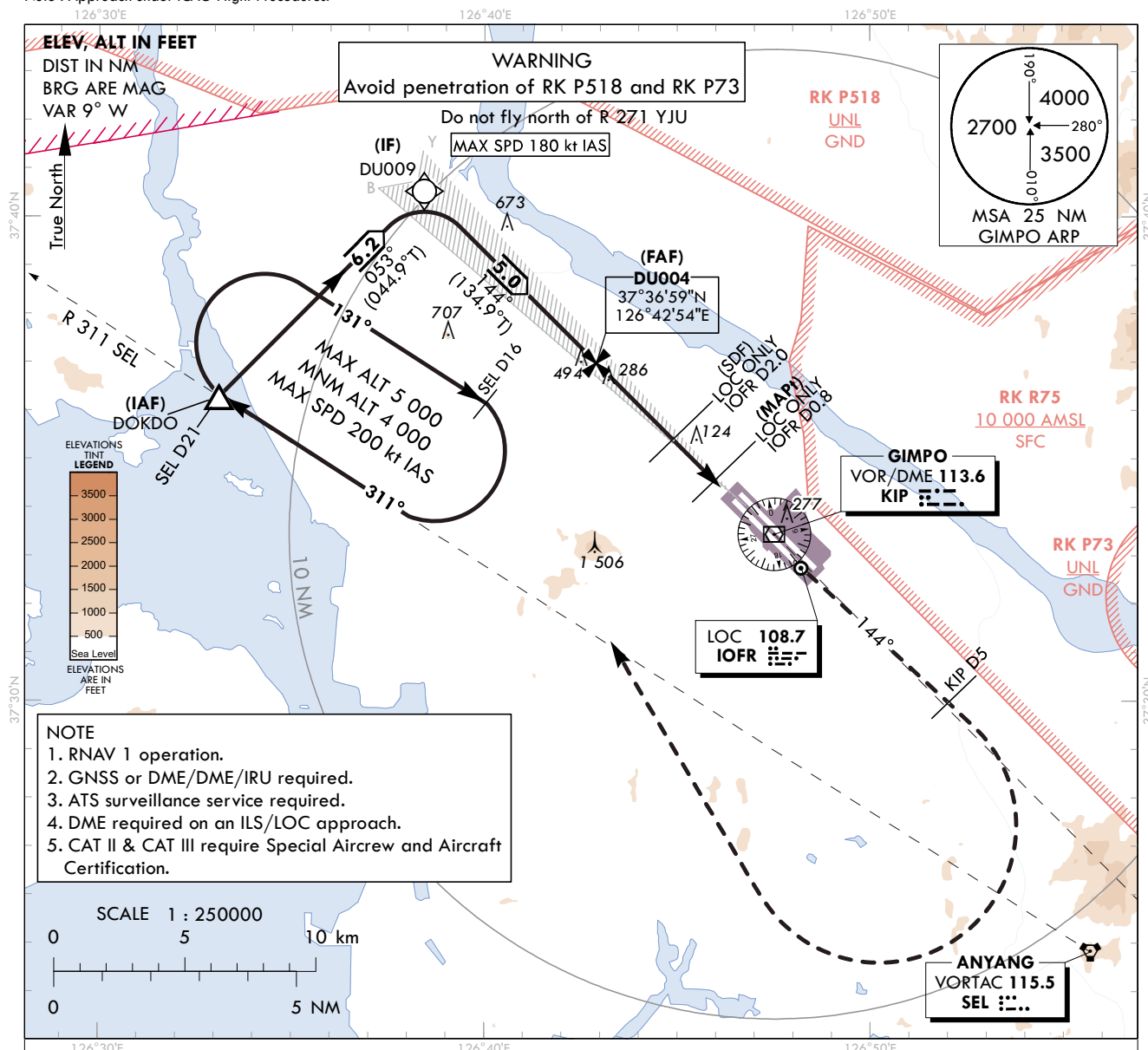
Note : Approach under ICAO Flight Procedures.

AERODROME ELEV 59 ft
HEIGHTS RELATED TO
THR RWY 14R - ELEV 34 ft

SEOUL APP 119.75
119.1
GIMPO TWR 118.1
118.05

SEOUL/Gimpo Intl(RKSS)

ILS or LOC RWY 14R
CAT II & III



RECOMMENDED PROFILE	DME IOFR	4	3	2
Final Approach Gradient 5.24%, 318 ft/NM	ALT(HGT)	1 336 (1 302)	1 018 (984)	700 (666)

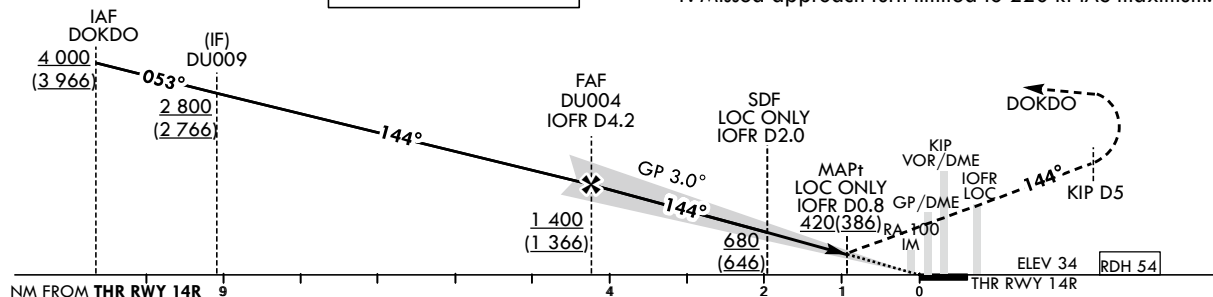
TRANSITION ALT 14 000
TRANSITION LVL FL 140

MISSED APPROACH

Climb to 4 000 ft on HDG 144° to KIP D5 then turn right to intercept and proceed via R 311 SEL to DOKDO. Hold as published.

NOTE

1. Missed approach turn limited to 220 kt IAS maximum.



OCA (H)	A	B	C	D
CAT-I		234 (200)		
LOC		420 (386)		
CAT II		134 (100)		
CAT III		-		

* Timing Not authorized for defining MAPt.
* Circling Not authorized.

Change : Information of landing minima(OCA(H)) and NOTE.

SEOUL/Gimpo Intl(RKSS)
ILS or LOC RWY 14R
CAT II & III

AERONAUTICAL DATA TABULATION

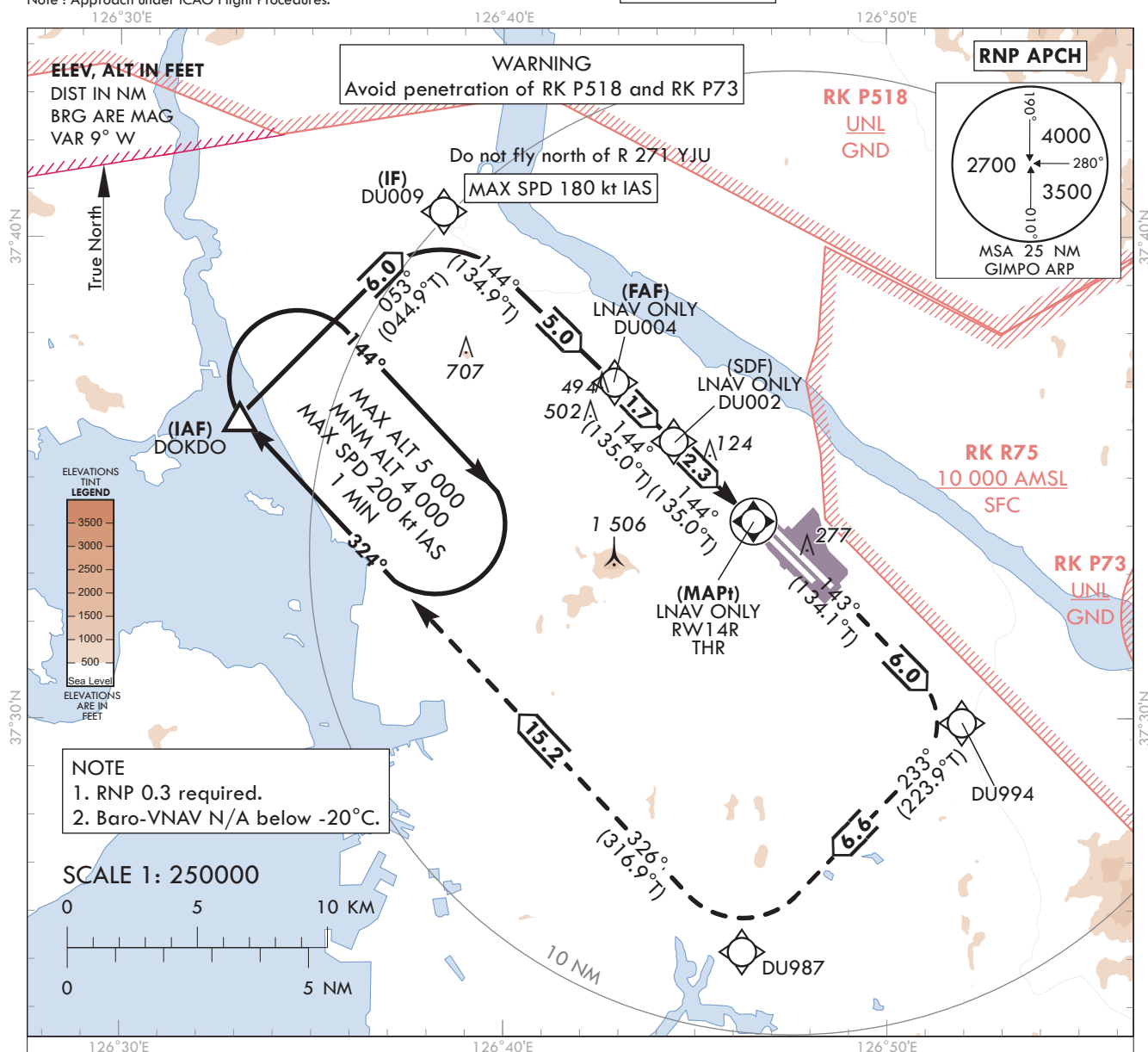
ILS/LOC Approach to RWY 14R from DOKDO		
Fix / Point		Coordinates
DOKDO(IAF)		37°36'17.1"N 126°33'07.1"E
DU009(IF)	BRG 53.48°/6.00 NM	37°40'31.8"N 126°38'26.2"E
DU004(FAF)	BRG 143.53°/4.20 NM IOFR	37°36'59.0"N 126°42'54.3"E
D2.0 IOFR (SDF LOC ONLY)	BRG 143.53°/2.00 NM IOFR	37°35'23.9"N 126°44'53.9"E
D0.8 IOFR (MAPt LOC ONLY)	BRG 143.53°/0.80 NM IOFR	37°34'32.9"N 126°45'58.1"E
THR RWY 14R		37°34'06.19"N 126°46'31.60"E
IOFR DME		37°34'01.9"N 126°46'44.2"E
KIP VOR/DME		37°33'27.1"N 126°47'31.3"E
D5 KIP	HDG 144	37°29'50.7"N 126°51'52.7"E
DOKDO	R 311 SEL/21.00 NM	37°36'17.1"N 126°33'07.1"E

INSTRUMENT
APPROACH
CHART-ICAOAERODROME ELEV 59 ft
HEIGHTS RELATED TO
THR RWY 14R - ELEV 34 ftSEOUL APP 119.75
119.1
GIMPO TWR 118.1
118.05

SEOUL/Gimpo Intl(RKSS)

RNP RWY 14R

Note : Approach under ICAO Flight Procedures.



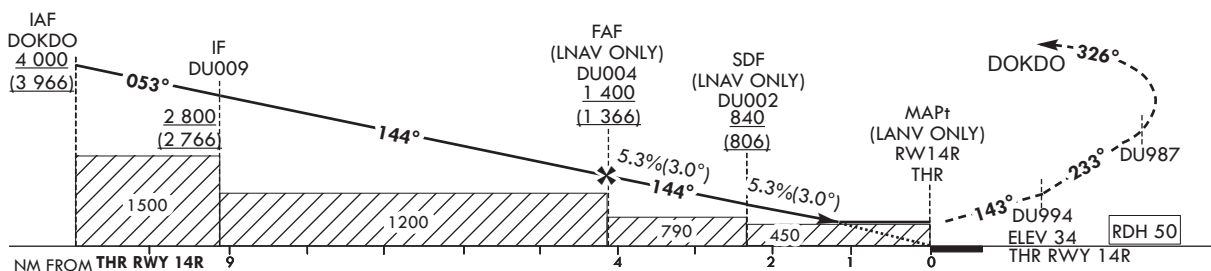
MISSED APPROACH

Climb to 4 000 ft. Track to DU994, DU987 and DOKDO. Hold as published.

TRANSITION ALT 14 000
TRANSITION LVL FL 140

NOTE

1. Missed approach turn limited to 220 kt IAS maximum.



OCA (H)		A	B	C	D		Knots	60	90	120	150	180
Straight-in Approach	LNAV/VNAV	450 (416)				Rate of descent	V/V fpm	318	478	637	796	955
	LNAV	450 (416)				* Timing Not authorized for defining MAPt. * Circling Not authorized.						

Change : Information of landing minima(OCA(H)).

SEOUL/Gimpo Intl(RKSS)
RNP RWY 14R

AERONAUTICAL DATA TABULATION

Instrument Approach Procedure Coding Tables

RNP RWY 14R

Serial Number	Path Descriptor	Waypoint Identifier	Fly-over	Course/Track °M(°T)	Distance (NM)	Turn direction	Altitude (ft)	Speed (kt)	Coordinates	VPA/ TCH	Navigation specification	Remarks
001	IF	DOKDO	-	-	-	-	+4 000	-	37°36'17.1"N 126°33'07.1"E	-	RNP APCH	IAF
002	TF	DU009	-	053 (044.9)	6.0	-	+2 800	-180	37°40'31.8"N 126°38'26.2"E	-	RNP APCH	IF
003	TF	DU004	-	144 (134.9)	5.0	-	+1 400	-	37°36'59.0"N 126°42'54.3"E	-	RNP APCH	FAF
004	TF	DU002	-	144 (135.0)	1.7	-	+840	-	37°35'45.6"N 126°44'26.6"E	-	RNP APCH	SDF
005	TF	RW14R	Y	144 (135.0)	2.3	-	+450	-	37°34'06.19"N 126°46'31.60"E	-3.01 / 50	RNP APCH	MAPt
006	TF	DU994	-	143 (134.1)	6.0	-	-	-	37°29'54.5"N 126°51'57.6"E	-	RNP APCH	-
007	TF	DU987	-	233 (223.9)	6.6	-	-	-220	37°25'09.3"N 126°46'13.6"E	-	RNP APCH	-
008	TF	DOKDO	Y	326 (316.9)	15.2	-	+4 000	-220	37°36'17.1"N 126°33'07.1"E	-	RNP APCH	-
009	HM	DOKDO	Y	324 (314.9)	-	R	-5 000 +4 000	-200	37°36'17.1"N 126°33'07.1"E	-	RNP APCH	1 min (Outbound timing)

SEOUL APP	119.75
	119.1
GIMPO TWR	118.1
	118.05

ILS or LOC RWY 32L

ELEV, ALT IN FEET
DIST IN NM
BRG ARE MAG
VAR 9° W

WARNING
 Avoid penetration of RK P518 and RK P73
 Do not fly north of R 271 YJU

GIMPO
 VOR/DME 113.6
 KIP 113.6

LOC 108.3
 IKMO 108.3

(MAHF) CAVOI
 MAX ALT 6 000
 MNM ALT 4 000

(FAF) DT006
 37°28'43"N
 126°53'17"E

ANYANG
 VORTAC 115.5
 SEL 115.5

(IAF) SUNEM

(IF) WONKO
 DT007
 DT009

(IAF) APOMO
 5.0
 259°
 (250.7°T)

(IAF) BUMSI
 144°
 MAX ALT 8 000
 MNM ALT 8 000
 MAX SPD 230 kt IAS
 1 MIN
 324°

NOTE
 1. RNAV 1 operation.
 2. GNSS or DME/DME/IRU required.
 3. ATS surveillance service required.
 4. DME required on an ILS/LOC approach.

MOA HTA 2
 1 500 AMSL
 SFC

MOA HTA 1
 1 000 AMSL
 SFC

SCALE 1:450000
 0 5 10 km
 0 5 NM

ELEVATIONS TINT LEGEND
 3500
 3000
 2500
 2000
 1500
 1000
 500
 Sea Level
 ELEVATIONS ARE IN FEET

True North

MSA 25 NM
GIMPO ARP

RK P518
 UNL
 GND

RK P73
 UNL
 GND

RK R75
 10 000 AMSL
 SFC

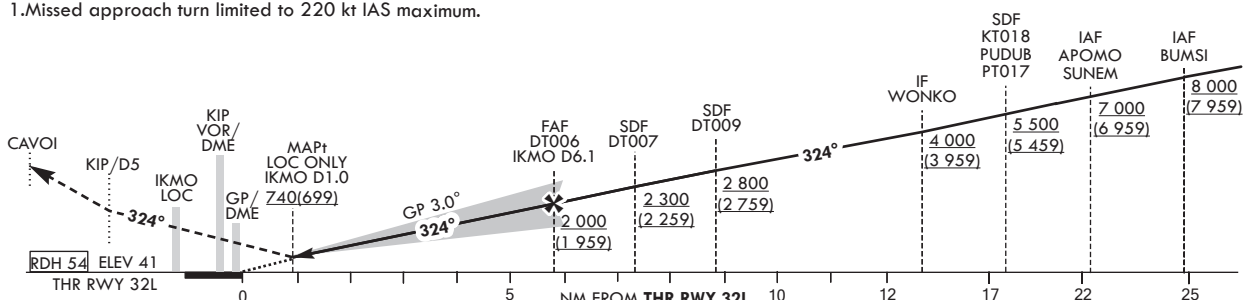
RK R35
 2 500 AMSL
 GND

RECOMMENDED PROFILE	DME IKMO	6	5	4	3
Final Approach Gradient 5.24%, 318 ft/NM	ALT(HGT)	1 969 (1 926)	1 655 (1 614)	1 328 (1 287)	1 004 (963)

TRANSITION ALT 14 000
TRANSITION LVL FL 140

NOTE

1. Missed approach turn limited to 220 kt IAS maximum.



OCA (H)		A	B	C	D	MISSED APPROACH After 500 ft, Climb on HDG 324° to KIP D5. Continue climb to 4 000 ft. Turn left direct to CAVOI. Hold as published.
Straight-in Approach	CAT-I	241 (200)				
	LOC	740 (699)				

Change : Information of landing minima(OCA(H)).		
---	--	--

SEOUL/Gimpo Intl(RKSS)
ILS or LOC RWY 32L

AERONAUTICAL DATA TABULATION

ILS/LOC Approach to RWY 32L from APOMO(IAF) to WONKO(IF)		
Fix / Point		Coordinates
APOMO(IAF)		37°27'20.9"N 127°11'04.4"E
KT018(SDF)	BRG 259.29°/5.00 NM	37°25'41.9"N 127°05'11.1"E
WONKO(IF)	BRG 259.60°/5.10 NM	37°24'02.0"N 126°59'08.0"E
ILS/LOC Approach to RWY 32L from BUMSI to WONKO(IF)		
Fix / Point		Coordinates
BUMSI(IAF)		37°15'10.2"N 127°10'09.6"E
PUDUB(SDF)	BRG 323.86°/7.42 NM	37°20'26.5"N 127°03'36.6"E
WONKO(IF)	BRG 323.79°/5.06 NM	37°24'02.0"N 126°59'08.0"E
ILS/LOC Approach to RWY 32L from SUNEM(IAF) to WONKO(IF)		
Fix / Point		Coordinates
SUNEM(IAF)		37°17'00.6"N 126°50'21.9"E
PT017(SDF)	BRG 54.22°/5.00 NM	37°20'30.7"N 126°54'50.7"E
WONKO(IF)	BRG 52.77°/4.90 NM	37°24'02.0"N 126°59'08.0"E
ILS/LOC Approach to RWY 32L from WONKO(IF) to MAHF		
Fix / Point		Coordinates
DT009(SDF)	BRG 323.72°/9.10 NM IKMO	37°26'36.1"N 126°55'55.6"E
DT007(SDF)	BRG 323.72°/7.50 NM IKMO	37°27'44.9"N 126°54'29.5"E
DT006(FAF)	BRG 323.72°/6.10 NM IKMO	37°28'42.9"N 126°53'17.0"E
D1.0 IKMO (MAPt LOC ONLY)	BRG 323.72°/1.00 NM IKMO	37°32'17.6"N 126°48'48.0"E
THR RWY 32L		37°32'52.83"N 126°48'03.71"E
IKMO DME		37°32'57.4"N 126°47'51.3"E
KIP VOR/DME		37°33'27.1"N 126°47'31.3"E
Climb to 500 ft	HDG 324	-
D5 KIP	HDG 324	37°36'59.7"N 126°43'04.6"E
CAVOI	BRG 223.11°/19.00 NM SEL	37°32'02.0"N 126°33'37.0"E

**INSTRUMENT
APPROACH
CHART-ICAO**

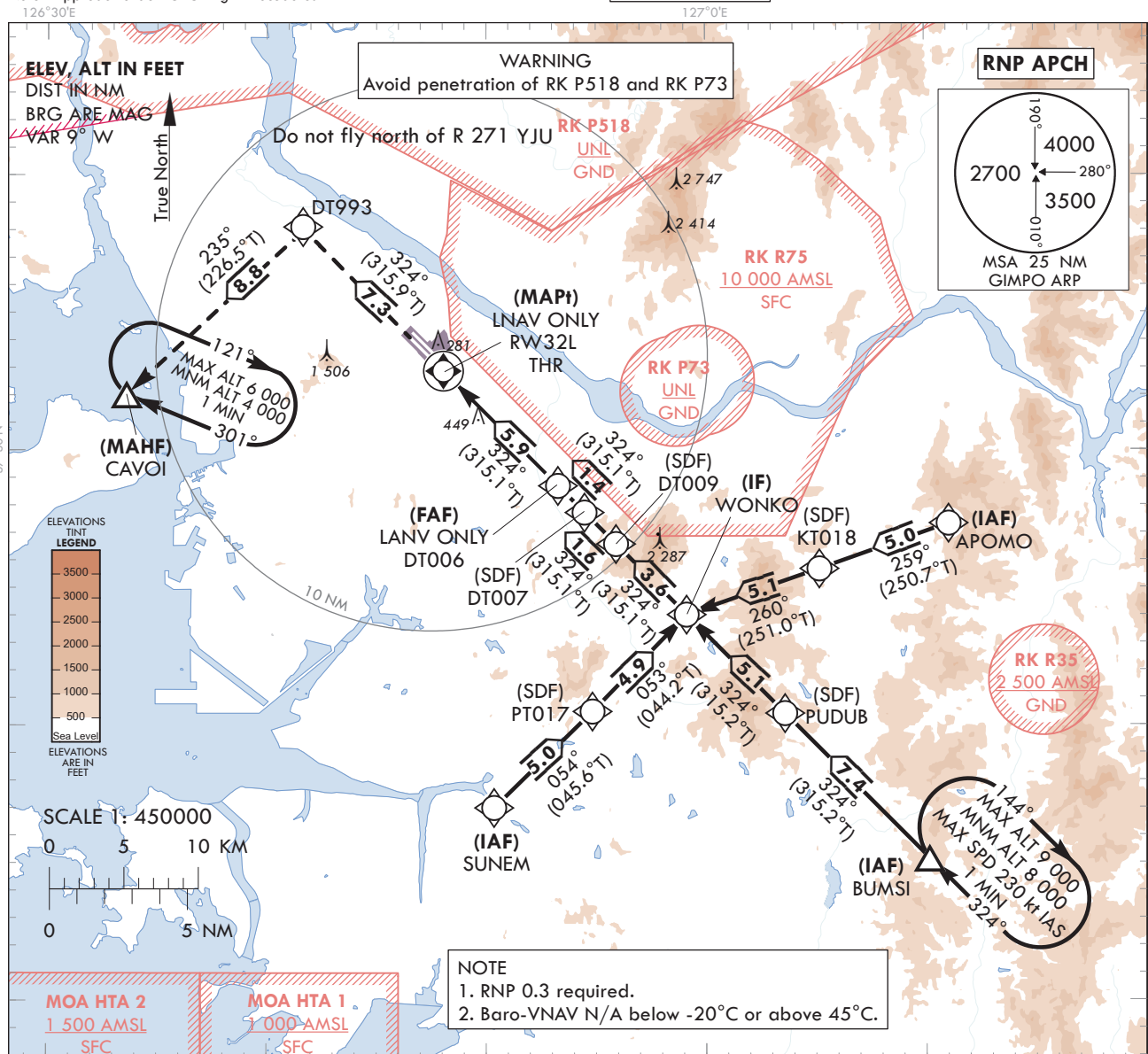
AERODROME ELEV 59 ft
HEIGHTS RELATED TO
THR RWY 32L - ELEV 41 ft

SEOUL APP 119.75
119.1
GIMPO TWR 118.2
118.8

SEOUL/Gimpo Intl(RKSS)

RNP RWY 32L

Note : Approach under ICAO Flight Procedures.



126°30'E

127°0'E

MISSED APPROACH

Climb to 4 000 ft. Track to DT993 and CAVOI.
Hold as published.

TRANSITION ALT 14 000
TRANSITION LVL FL 140

CAVOI
DT993
MAPt (LNAV ONLY) RW32L THR
FAF (LNAV ONLY) DT006
SDF DT007
SDF DT009
IF WONKO
SDF KT018 PUDUB PT017
IAF APOMO SUNEM
IAF BUMSI

324°
5.3% (3.1°)
324°
324°

RDH 50 ELEV 41
THR RWY 32L

0 5 10 12 17 22 25 NM FROM THR RWY 32L

Altitudes (ft): 2 000 (1 959), 2 300 (2 259), 2 800 (2 759), 4 000 (3 959), 5 500 (5 459), 7 000 (6 959), 8 000 (7 959)

Distances (NM): 700, 1 600, 2 300, 2 800, 3 300

OCA (H)

A

B

C

D

Knots

60

90

120

150

180

Straight-in
Approach

LNAV/VNAV

610 (569)

Rate of
descent

V/V fpm

325

487

649

812

974

LNAV

700 (659)

* Timing Not authorized for defining MAPt.

* Circling Not authorized.

Change : Amended chart symbol.

SEOUL/Gimpo Intl(RKSS)
RNP RWY 32L

AERONAUTICAL DATA TABULATION

Instrument Approach Procedure Coding Tables

RNP RWY 32L - via APOMO to WONKO(IF)

Serial Number	Path Descriptor	Waypoint Identifier	Fly-over	Course/Track °M(°T)	Distance (NM)	Turn direction	Altitude (ft)	Speed (kt)	Coordinates	VPA/RDH	Navigation specification	Remarks
001	IF	APOMO	-	-	-	-	+7 000	-	37°27'20.9"N 127°11'04.4"E	-	RNP APCH	IAF
002	TF	KT018	-	259 (250.7)	5.0	-	+5 500	-	37°25'41.9"N 127°05'11.1"E	-	RNP APCH	SDF
003	TF	WONKO	-	260 (251.0)	5.1	-	+4 000	-	37°24'02.0"N 126°59'08.0"E	-	RNP APCH	IF

RNP RWY 32L - via BUMSI to WONKO(IF)

Serial Number	Path Descriptor	Waypoint Identifier	Fly-over	Course/Track °M(°T)	Distance (NM)	Turn direction	Altitude (ft)	Speed (kt)	Coordinates	VPA/RDH	Navigation specification	Remarks
001	IF	BUMSI	-	-	-	-	+8 000	-	37°15'10.2"N 127°10'09.6"E	-	RNP APCH	IAF
002	TF	PUDU8	-	324 (315.2)	7.4	-	+5 500	-	37°20'26.5"N 127°03'36.6"E	-	RNP APCH	SDF
003	TF	WONKO	-	324 (315.2)	5.1	-	+4 000	-	37°24'02.0"N 126°59'08.0"E	-	RNP APCH	IF

RNP RWY 32L - via SUNEM to WONKO(IF)

Serial Number	Path Descriptor	Waypoint Identifier	Fly-over	Course/Track °M(°T)	Distance (NM)	Turn direction	Altitude (ft)	Speed (kt)	Coordinates	VPA/RDH	Navigation specification	Remarks
001	IF	SUNEM	-	-	-	-	+7 000	-	37°17'00.6"N 126°50'21.9"E	-	RNP APCH	IAF
002	TF	PT017	-	054 (045.6)	5.0	-	+5 500	-	37°20'30.7"N 126°54'50.7"E	-	RNP APCH	SDF
003	TF	WONKO	-	053 (044.2)	4.9	-	+4 000	-	37°24'02.0"N 126°59'08.0"E	-	RNP APCH	IF

RNP RWY 32L - via WONKO(IF) to MAHF

Serial Number	Path Descriptor	Waypoint Identifier	Fly-over	Course/Track °M(°T)	Distance (NM)	Turn direction	Altitude (ft)	Speed (kt)	Coordinates	VPA/RDH	Navigation specification	Remarks
003	TF	WONKO	-	-	-	-	+4 000	-	37°24'02.0"N 126°59'08.0"E	-	RNP APCH	IF
004	TF	DT009	-	324 (315.1)	3.6	-	+2 800	-	37°26'36.1"N 126°55'55.6"E	-	RNP APCH	SDF
005	TF	DT007	-	324 (315.1)	1.6	-	+2 300	-	37°27'44.9"N 126°54'29.5"E	-	RNP APCH	SDF
006	TF	DT006	-	324 (315.1)	1.4	-	+2 000	-	37°28'42.9"N 126°53'17.0"E	-	RNP APCH	FAF
007	TF	RW32L	Y	324 (315.1)	5.9	-	+700	-	37°32'52.83"N 126°48'03.71"E	-3.06/50	RNP APCH	MAPt
008	TF	DT993	-	324 (315.9)	7.3	-	-	-	37°38'07.5"N 126°41'39.6"E	-	RNP APCH	-
009	TF	CAVOI	Y	235 (226.5)	8.8	-	+4 000	-	37°32'02.0"N 126°33'37.0"E	-	RNP APCH	-

HOLDING PROCEDURE

Holding Identification	Path Descriptor	Waypoint Identifier	Fly-over	Course/Track °M(°T)	Time (min)	Turn direction	Altitude (ft)	Speed (kt)	Coordinates	VPA/RDH	Navigation specification	Remarks
RNP RWY 32L	HM	BUMSI	Y	324 (315.2)	1	R	-9 000 +8 000	-230	37°15'10.2"N 127°10'09.6"E	-	RNAV 1	-
	HM	CAVOI	Y	301 (292.2)	1	R	-6 000 +4 000	-	37°32'02.0"N 126°33'37.0"E	-	RNAV 1	-

**INSTRUMENT
APPROACH
CHART-ICAO**

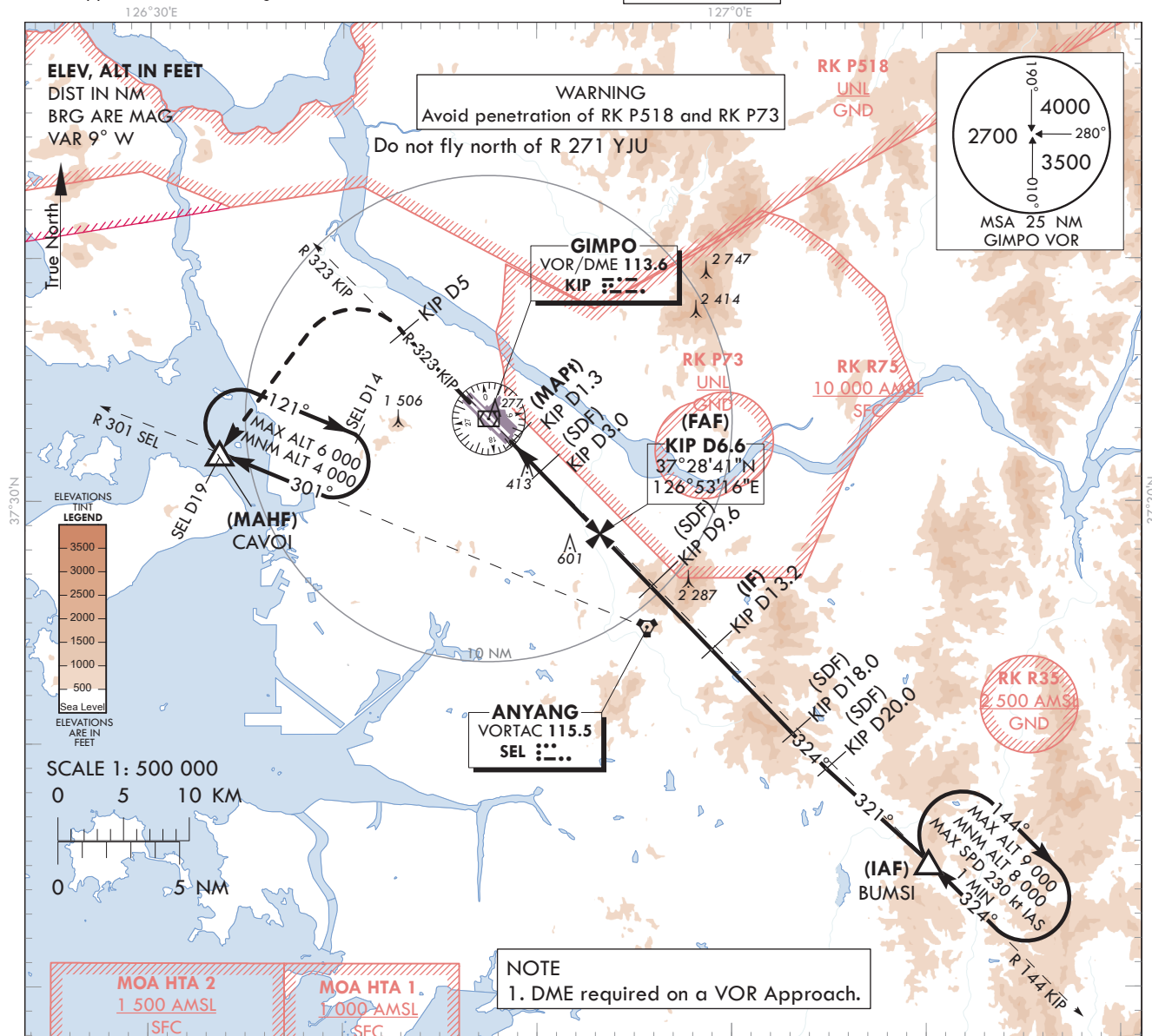
AERODROME ELEV 59 ft
HEIGHTS RELATED TO
THR RWY 32L - ELEV 41 ft

SEOUL APP 119.75
119.1
GIMPO TWR 118.1
118.05

SEOUL/Gimpo Intl(RKSS)

VOR RWY 32L

Note : Approach under ICAO Flight Procedures.



RECOMMENDED PROFILE	DME KIP	6	5	4	3
Final Gradient 5.2%(316.7 ft/NM) to SDF, 5.5%(335.7 ft/NM) to THR	ALT(HGT)	1 810(1 769)	1 493(1 452)	1 177(1 136)	860(819)

MISSED APPROACH

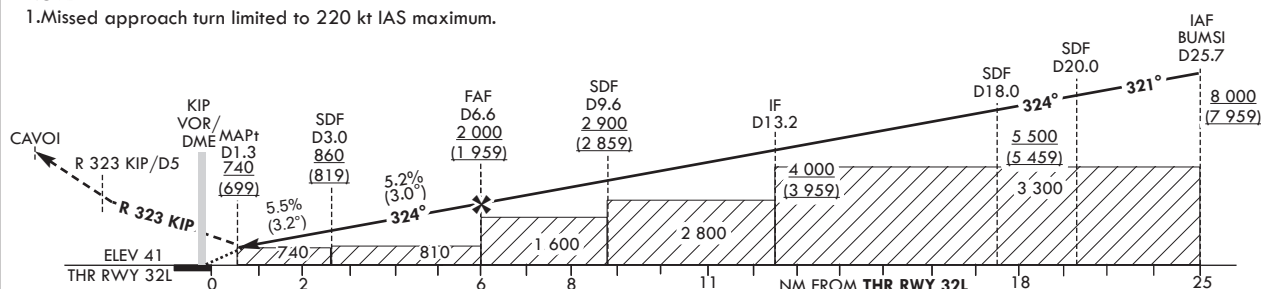
Climb to 4 000 ft on R 323 KIP to 5 DME then turn left direct to CAVOI.

Hold as published.

NOTE

1. Missed approach turn limited to 220 kt IAS maximum.

TRANSITION ALT 14 000
TRANSITION LVL FL 140



OCA (H)	A	B	C	D	Rate of descent	V/V fpm	319	478	637	797	956
Straight-in Approach	740 (699)					*Timing Not authorized for defining MAPt. *Circling Not authorized.					

Change : Information of landing minima(OCA(H)).

SEOUL/Gimpo Intl(RKSS)
VOR RWY 32L

AERONAUTICAL DATA TABULATION

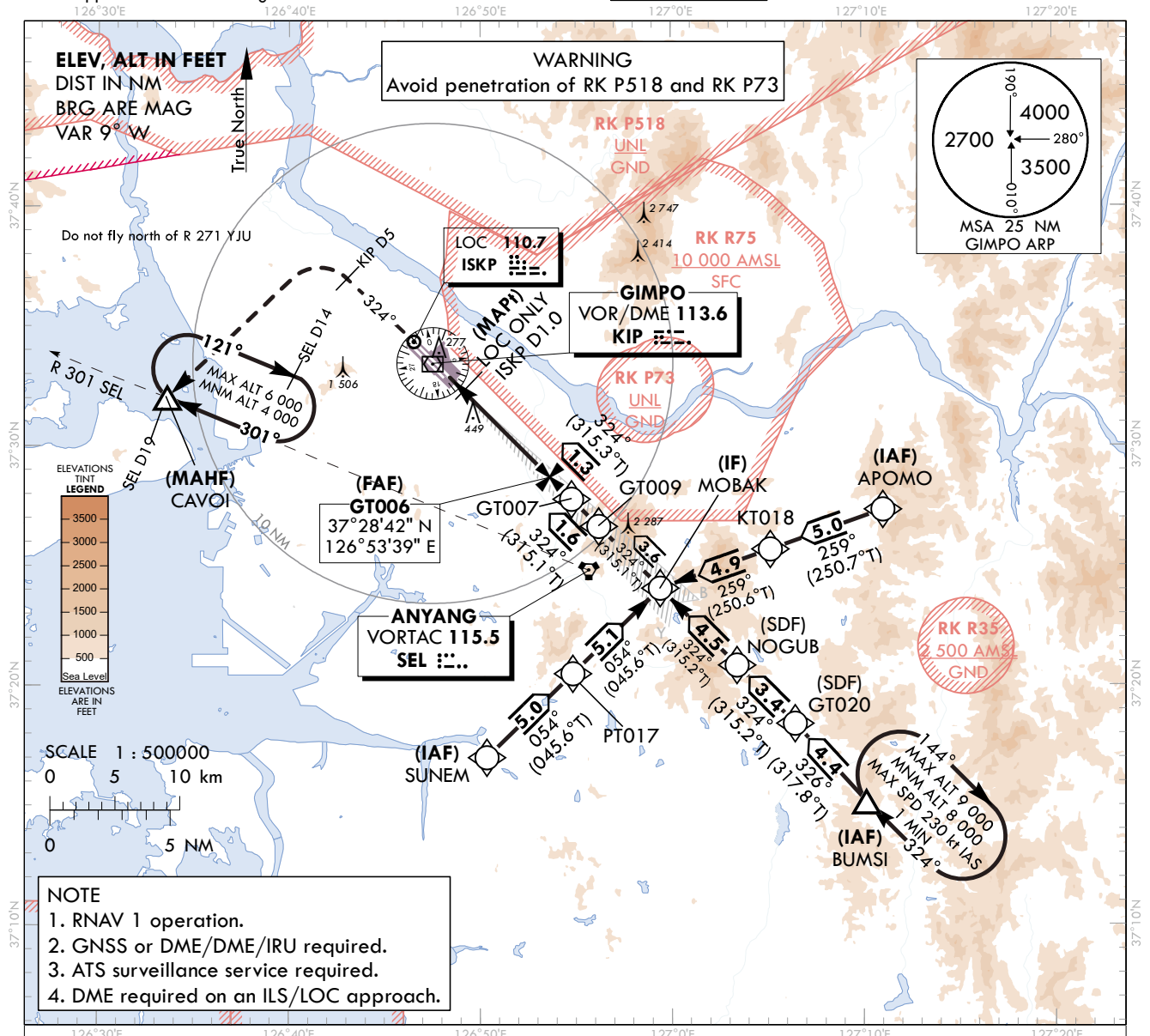
VOR Approach to RWY 32L from BUMSI			
Fix / Point		Coordinates	
BUMSI(IAF)		37°15'10.2"N	127°10'09.6"E
D20 KIP(SDF)	BRG 320.65°/5.68 NM	37°19'00.4"N	127°04'54.7"E
D18 KIP(SDF)	BRG 324.48°/18.00 NM KIP	37°20'27.2"N	127°03'10.7"E
D13.2 KIP(IF)	BRG 324.48°/13.20 NM KIP	37°23'55.4"N	126°59'00.7"E
D9.6 KIP(SDF)	BRG 324.48°/9.60 NM KIP	37°26'31.4"N	126°55'52.9"E
D6.6 KIP(FAF)	BRG 324.48°/6.60 NM KIP	37°28'41.4"N	126°53'16.3"E
D3.0 KIP(SDF)	BRG 324.48°/3.00 NM KIP	37°31'17.3"N	126°50'08.2"E
D1.3 KIP(MAPt)	BRG 324.48°/1.30 NM KIP	37°32'30.8"N	126°48'39.2"E
THR RWY 32L	Final approach descent angle 2.98°(FAF - SDF)/3.16°(SDF - THR)	37°32'52.83"N	126°48'03.71"E
KIP VOR/DME		37°33'27.1"N	126°47'31.3"E
D5 KIP	R 323 KIP/5.00 NM	37°36'59.7"N	126°43'04.6"E
CAVOI	BRG 223.11°/19.00 NM SEL	37°32'02.0"N	126°33'37.0"E

INSTRUMENT
APPROACH
CHART - ICAOAERODROME ELEV 59 ft
HEIGHTS RELATED TO
THR RWY 32R - ELEV 42 ftSEOUL APP 119.75
119.1
GIMPO TWR 118.1
118.05

SEOUL/Gimpo Intl(RKSS)

ILS or LOC RWY 32R

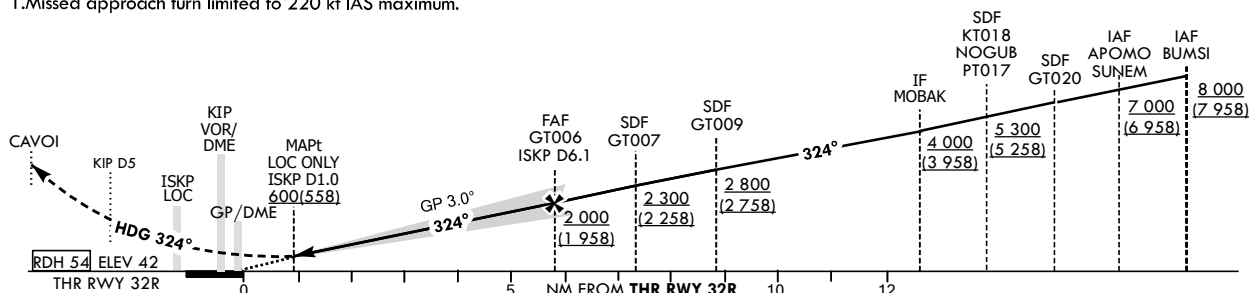
Note : Approach under ICAO Flight Procedures.



RECOMMENDED PROFILE	DME ISKP	6	5	4	3	2
Final Approach Gradient 5.24%, 318 ft/NM	ALT(HGT)	1 968 (1 926)	1 656 (1 614)	1 330 (1 288)	1 005 (963)	682 (640)

NOTE

1. Missed approach turn limited to 220 kt IAS maximum.



OCA (H)	A	B	C	D
Straight-in Approach	CAT-I	242 (200)		
	LOC	600 (558)		

MISSED APPROACH

After 500 ft, Climb on HDG 324° to KIP D5.
Continue climb to 4 000 ft.
Turn left direct to CAVOI. Hold as published.

* Timing Not authorized for defining MAPt.
* Circling Not authorized.

Change : Information of landing minima(OCA(H)).

SEOUL/Gimpo Intl(RKSS)
ILS or LOC RWY 32R

AERONAUTICAL DATA TABULATION

ILS/LOC Approach to RWY 32R from APOMO(IAF) to MOBAK(IF)		
Fix / Point		Coordinates
APOMO(IAF)		37°27'20.9"N 127°11'04.4"E
KT018(SDF)	BRG 259.29°/5.00 NM	37°25'41.9"N 127°05'11.1"E
MOBAK(IF)	BRG 259.23°/4.87 NM	37°24'04.7"N 126°59'25.2"E
ILS/LOC Approach to RWY 32R from BUMSI to MOBAK(IF)		
Fix / Point		Coordinates
BUMSI(IAF)		37°15'10.2"N 127°10'09.6"E
GT020(SDF)	BRG 326.37°/4.40 NM	37°18'25.8"N 127°06'27.1"E
NOGUB(SDF)	BRG 323.82°/3.42 NM	37°20'51.6"N 127°03'25.8"E
MOBAK(IF)	BRG 323.79°/4.53 NM	37°24'04.7"N 126°59'25.2"E
ILS/LOC Approach to RWY 32R from SUNEM(IAF) to MOBAK(IF)		
Fix / Point		Coordinates
SUNEM(IAF)		37°17'00.6"N 126°50'21.9"E
PT017(SDF)	BRG 54.22°/5.00 NM	37°20'30.7"N 126°54'50.7"E
MOBAK(IF)	BRG 54.26°/5.10 NM	37°24'04.7"N 126°59'25.2"E
ILS/LOC Approach to RWY 32R from MOBAK(IF) to MAHF		
Fix / Point		Coordinates
GT009(SDF)	BRG 323.75°/9.00 NM ISKP	37°26'39.3"N 126°56'12.2"E
GT007(SDF)	BRG 323.75°/7.40 NM ISKP	37°27'47.4"N 126°54'47.0"E
GT006(FAF)	BRG 323.90°/6.10 NM ISKP	37°28'42.2"N 126°53'38.9"E
D1.0 ISKP (MAPt LOC ONLY)	BRG 323.90°/1.00 NM ISKP	37°32'16.7"N 126°49'09.7"E
THR RWY 32R		37°32'51.89"N 126°48'25.58"E
ISKP DME		37°32'56.3"N 126°48'12.9"E
KIP VOR/DME		37°33'27.1"N 126°47'31.3"E
Climb to 500 ft	HDG 324	-
D5 KIP	HDG 324	37°36'59.7"N 126°43'04.6"E
CAVOI	BRG 222.76°/19.00 NM SEL	37°32'02.0"N 126°33'37.0"E

**INSTRUMENT
APPROACH
CHART-ICAO**

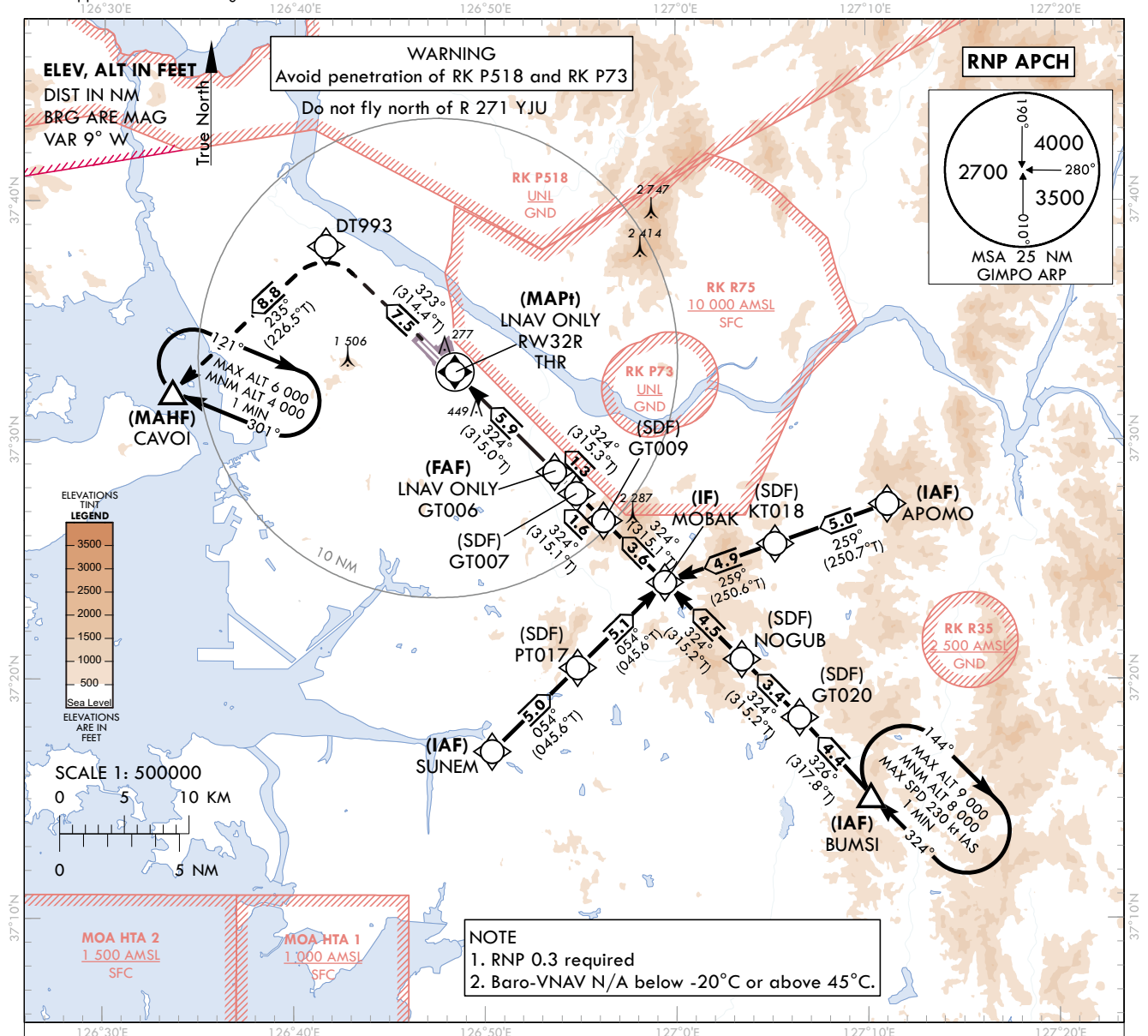
AERODROME ELEV 59 ft
HEIGHTS RELATED TO
THR RWY 32R - ELEV 42 ft

SEOUL APP 119.75
119.1
GIMPO TWR 118.1
118.05

SEOUL/Gimpo Intl(RKSS)

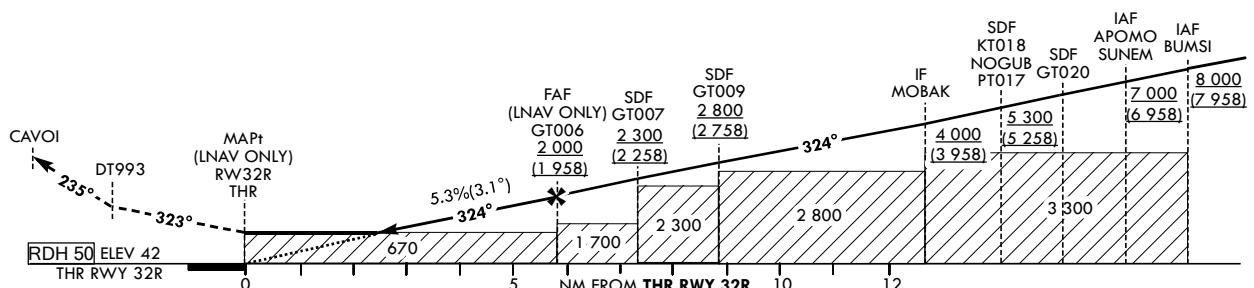
RNP RWY 32R

Note : Approach under ICAO Flight Procedures.



MISSED APPROACH

Climb to 4 000 ft. Track to DT993 and CAVOI.
Hold as published.



OCA (H)		A	B	C	D		Knots	60	90	120	150	180
Straight-in Approach	LNNAV/VNAV	600 (558)				Rate of descent	V/V fpm	325	487	649	812	974
	LNNAV	670 (628)				*Timing Not authorized for defining MAPt. *Circling Not authorized.						

Change : Information of landing minima(OCA(H)).

SEOUL/Gimpo Intl(RKSS)
RNP RWY 32R

AERONAUTICAL DATA TABULATION

Instrument Approach Procedure Coding Tables

RNP RWY 32R - via APOMO to MOBAK(IF)

Serial Number	Path Descriptor	Waypoint Identifier	Fly-over	Course/Track °M(°T)	Distance (NM)	Turn direction	Altitude (ft)	Speed (kt)	Coordinates	VPA/RDH	Navigation specification	Remarks
001	IF	APOMO	-	-	-	-	+7 000	-	37°27'20.9"N 127°11'04.4"E	-	RNP APCH	IAF
002	TF	KT018	-	259 (250.7)	5.0	-	+5 300	-	37°25'41.9"N 127°05'11.1"E	-	RNP APCH	SDF
003	TF	MOBAK	-	259 (250.6)	4.9	-	+4 000	-	37°24'04.7"N 126°59'25.2"E	-	RNP APCH	IF

RNP RWY 32R - via BUMSI to MOBAK(IF)

Serial Number	Path Descriptor	Waypoint Identifier	Fly-over	Course/Track °M(°T)	Distance (NM)	Turn direction	Altitude (ft)	Speed (kt)	Coordinates	VPA/RDH	Navigation specification	Remarks
001	IF	BUMSI	-	-	-	-	+8 000	-	37°15'10.2"N 127°10'09.6"E	-	RNP APCH	IAF
002	TF	GT020	-	326 (317.8)	4.4	-	-	-	37°18'25.8"N 127°06'27.1"E	-	RNP APCH	SDF
003	TF	NOGUB	-	324 (315.2)	3.4	-	+5 300	-	37°20'51.6"N 127°03'25.8"E	-	RNP APCH	SDF
004	TF	MOBAK	-	326 (317.4)	4.9	-	+4 000	-	37°24'04.7"N 126°59'25.2"E	-	RNP APCH	IF

RNP RWY 32R - via SUNEK to MOBAK(IF)

Serial Number	Path Descriptor	Waypoint Identifier	Fly-over	Course/Track °M(°T)	Distance (NM)	Turn direction	Altitude (ft)	Speed (kt)	Coordinates	VPA/RDH	Navigation specification	Remarks
001	IF	SUNEK	-	-	-	-	+7 000	-	37°17'00.6"N 126°50'21.9"E	-	RNP APCH	IAF
002	TF	PT017	-	054 (045.6)	5.0	-	+5 300	-	37°20'30.7"N 126°54'50.7"E	-	RNP APCH	SDF
003	TF	MOBAK	-	054 (045.6)	5.1	-	+4 000	-	37°24'04.7"N 126°59'25.2"E	-	RNP APCH	IF

RNP RWY 32R - via MOBAK(IF) to MAHF

Serial Number	Path Descriptor	Waypoint Identifier	Fly-over	Course/Track °M(°T)	Distance (NM)	Turn direction	Altitude (ft)	Speed (kt)	Coordinates	VPA/RDH	Navigation specification	Remarks
003	TF	MOBAK	-	-	-	-	+4 000	-	37°24'04.7"N 126°59'25.2"E	-	RNP APCH	IF
004	TF	GT009	-	324 (315.1)	3.6	-	+2 800	-	37°26'39.3"N 126°56'12.2"E	-	RNP APCH	SDF
005	TF	GT007	-	324 (315.1)	1.6	-	+2 300	-	37°27'47.4"N 126°54'47.0"E	-	RNP APCH	SDF
006	TF	GT006	-	324 (315.3)	1.3	-	+2 000	-	37°28'42.2"N 126°53'38.9"E	-	RNP APCH	FAF
007	TF	RW32R	Y	324 (315.0)	5.9	-	+670	-	37°32'51.89"N 126°48'25.58"E	-3.06/50	RNP APCH	MAPt
008	TF	DT993	-	323 (314.4)	7.5	-	-	-	37°38'07.5"N 126°41'39.6"E	-	RNP APCH	-
009	TF	CAVOI	Y	235 (226.5)	8.8	-	+4 000	-	37°32'02.0"N 126°33'37.0"E	-	RNP APCH	-

HOLDING PROCEDURE

Holding Identification	Path Descriptor	Waypoint Identifier	Fly-over	Course/Track °M(°T)	Time (min)	Turn direction	Altitude (ft)	Speed (kt)	Coordinates	VPA/RDH	Navigation specification	Remarks
RNP RWY 32R	HM	BUMSI	Y	324 (315.2)	1	R	-9 000 +8 000	-230	37°15'10.2"N 127°10'09.6"E	-	RNAV 1	-
	HM	CAVOI	Y	301 (292.2)	1	R	-6 000 +4 000	-	37°32'02.0"N 126°33'37.0"E	-	RNAV 1	-

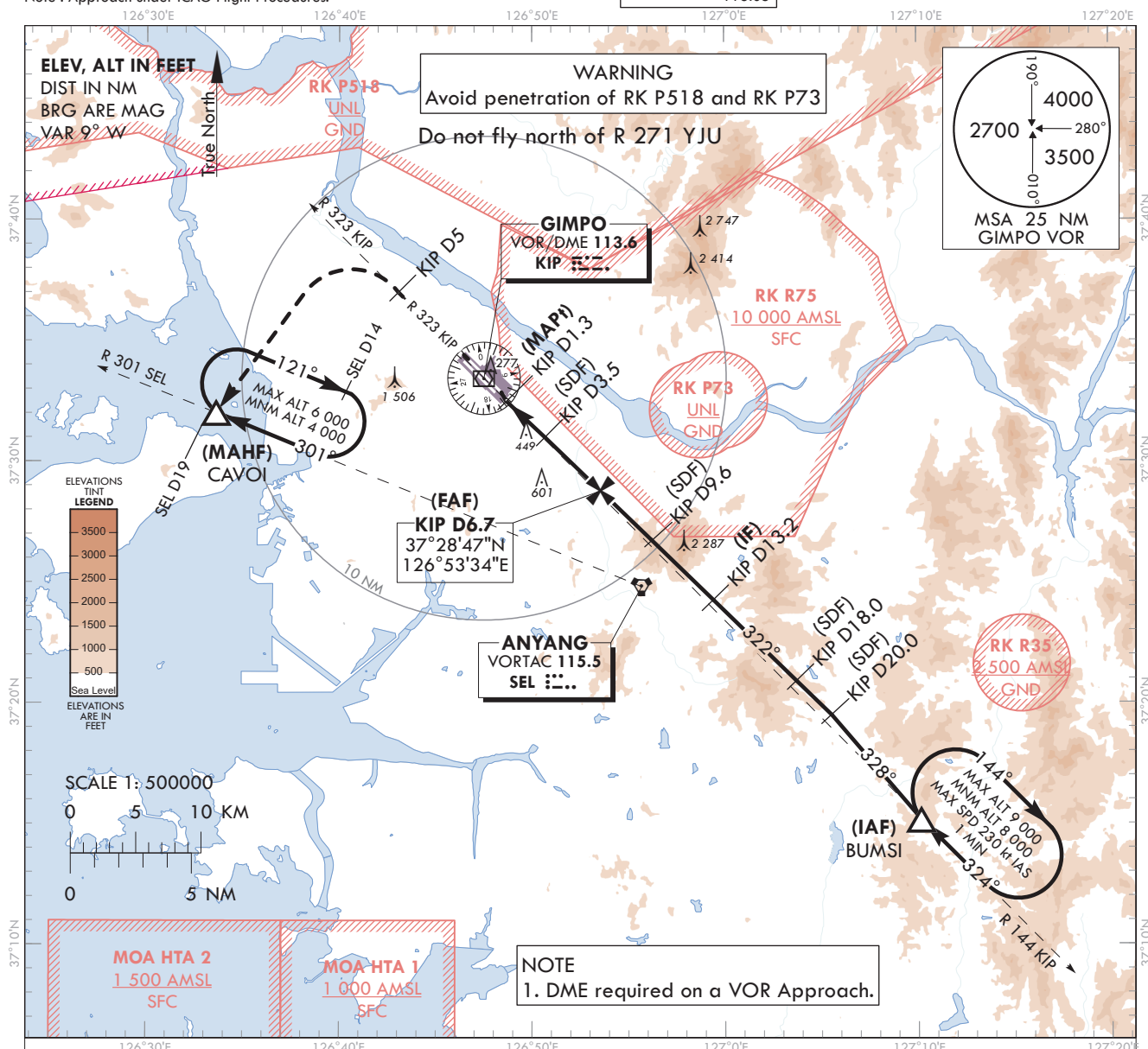
INSTRUMENT
APPROACH
CHART-ICAO

Note : Approach under ICAO Flight Procedures.

AERODROME ELEV 59 ft
HEIGHTS RELATED TO
THR RWY 32R - ELEV 42 ftSEOUL APP 119.75
119.1
GIMPO TWR 118.1
118.05

SEOUL/Gimpo Intl(RKSS)

VOR RWY 32R



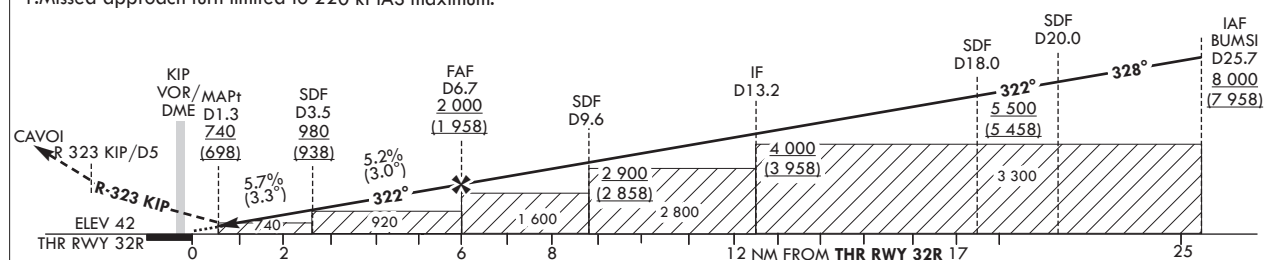
RECOMMENDED PROFILE	DME KIP	6	5	4	3
Final Gradient 5.2%(318.8 ft/NM) to SDF, 5.7%(345.5 ft/NM) to THR	ALT(HGT)	1 779 (1 737)	1 460 (1 418)	1 141 (1 399)	809 (767)

MISSED APPROACH

Climb to 4 000 ft on R 323 KIP to 5 DME then turn left direct to CAVOI.
Hold as published.TRANSITION ALT 14 000
TRANSITION LVL FL 140

NOTE

1. Missed approach turn limited to 220 kt IAS maximum.



						Knots	60	90	120	150	180
OCA (H)	A	B	C	D	Rate of descent	V/V fpm	331	486	661	827	992
Straight-in Approach	740 (698)				* Timing Not authorized for defining MAPt. * Circling Not authorized.						

Change : Information of landing minima(OCA(H)).

SEOUL/Gimpo Intl(RKSS)
VOR RWY 32R
AERONAUTICAL DATA TABULATION

VOR Approach to RWY 32R from BUMSI		
Fix / Point		Coordinates
BUMSI(IAF)		37°15'10.2"N 127°10'09.6"E
D20 KIP(SDF)	BRG 327.70°/5.69 NM	37°19'29.9"N 127°05'32.0"E
D18 KIP(SDF)	BRG 322.48°/18.00 NM KIP	37°20'53.8"N 127°03'44.2"E
D13.2 KIP(IF)	BRG 322.48°/13.20 NM KIP	37°24'15.2"N 126°59'25.7"E
D9.6 KIP(SDF)	BRG 322.48°/9.60 NM KIP	37°26'45.9"N 126°56'11.2"E
D6.7 KIP(FAF)	BRG 322.48°/6.70 NM KIP	37°28'47.0"N 126°53'34.1"E
D3.5 KIP(SDF)	BRG 322.48°/3.50 NM KIP	37°31'00.8"N 126°50'40.9"E
D1.3 KIP(MAPt)	BRG 322.48°/1.30 NM KIP	37°32'32.8"N 126°48'41.7"E
THR RWY 32R	Final approach descent angle 3.00°(FAF - SDF)/3.25°(SDF - THR)	37°32'51.89"N 126°48'25.58"E
KIP VOR/DME		37°33'27.1"N 126°47'31.3"E
D5 KIP	R 323 KIP/5.00 NM	37°36'59.7"N 126°43'04.6"E
CAVOI	BRG 223.11°/19.00 NM SEL	37°32'02.0"N 126°33'37.0"E